

Collembola from Oregon

HAROLD GEORGE SCOTT¹

The 11 species of springtail insects recorded in this paper were collected by Mr. Gerald F. Kraft (Department of Entomology, Oregon State University, Corvallis, Oregon) in connection with a U. S. Public Health Service grant study of the ecology of Berry Creek, Benton County, 9 miles north of Corvallis. Of these species only *Tomocerus flavescens* has been recorded previously from Oregon. Most specimens will be retained by Dr. Kraft, but examples will be deposited with the Academy of Natural Sciences, Philadelphia, Pennsylvania.

Hypogastrura promatro Wray, 1950.

OREGON RECORD. Berry Creek, Nov. 1960, G. F. Kraft.

DISTRIBUTION. Idaho, N. M., Ore., Utah.

Genus **XENYLLA** Tullberg, 1869

Xenylla humicola (Fabricius, 1780).

OREGON RECORDS. Berry Creek, Nov.-Dec. 1960, G. F. Kraft.

DISTRIBUTION. Mass., N. M., N. Y., Ore., Ontario (Canada), Europe.

Genus **SPINACHORUTES** gen. nov.

TYPE SPECIES. *Spinachorutes krafti* gen. et sp. nov.

DESCRIPTION. Subfamily Hypogastrurinae. Body elongate, segmented; Ant III sense organ with rods only; postantennal organ with 4 lobate tubercles; eyes 8 and 8, on dark eye-patches; mandible with molar surface; prothorax well developed; unguiculus present; furcula present, not reaching beyond colophore; anal spines 4.

DISCUSSION. The following combination of characters distinguishes *Spinachorutes* from all other known genera of Hypo-

¹ Training Branch, Communicable Disease Center, Public Health Service, U. S. Department of Health, Education, and Welfare, Atlanta 22, Georgia.

gastrurinae: (1) furcula and unguiculus present; (2) postantennal organ with 4 lobes; (3) anal spines 4; (4) eyes 8 and 8.

KEY TO GENERA OF NEARCTIC HYPOGASTRURINAE

1. Eyes and eyespots absent.....2
Eyes and eyespots present.....3
2. Postantennal organ with 4-12 tubercles.....**Willemia** Börner, 1901
Postantennal organ with 1 tubercle.....
.....**Stachiomella** Wray, 1957
3. Postantennal organ present; eyes 2 and 2 to 8 and 8.....4
Postantennal organ absent; eyes 5 and 5.....
.....**Xenylla** Tullberg, 1869
4. Postantennal organ with 4-8 tubercles.....5
Postantennal organ with 1 tubercle.....7
5. Eyes and 2 and 2; anal spines 2; postantennal organ with
7 tubercles.....**Mesachorutes** Absolon, 1900
Eyes 8 and 8; anal spines 0-4; postantennal organ with 4-7
tubercles.....6
6. Anal spines 4.....**Spinachorutes** gen. nov.
Anal spines 0-2.....**Hypogastrura** Bourlet, 1839
7. Anal spines present; furcula absent.....
.....**Knowltonella** Wray, 1958
Anal spines absent; furcula present.....
.....**Neobeckerella** Wray, 1952

Spinachorutes krafti gen. et sp. nov. Figure 1.

TYPE LOCALITY. Holotype and 4 paratypes, Berry Creek, 9 mi N of Corvallis, Benton County, OREGON, October 1960, by G. F. Kraft. Holotype will be deposited with the Academy of Natural Sciences, Philadelphia, Pennsylvania; paratypes are in the Oregon State University collection.

DESCRIPTION. Body elongate, segmented; background color white with heavy speckling of gray to black pigment giving a generally dark gray appearance; antenna subequal to head in length, set low on face; Ant III sense organ with rods, no cones; Ant IV with sensory papillae at tips; postantennal organ with 4 lobate tubercles, 2 large and 2 small; eyes 8 and 8 on dark eyepatches; mandible with molar surface; pronotum well devel-

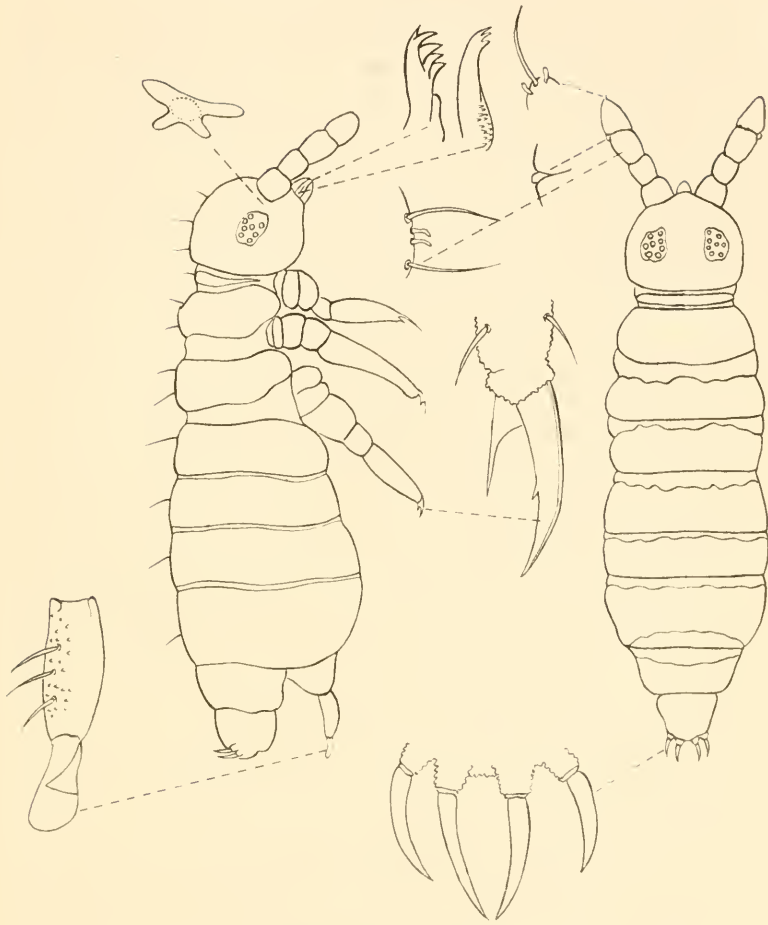


FIG. 1. *Spinachorutes krafti* gen. et sp. nov.

oped, setaceous, of same texture as other nota; unguis with 1 internal tooth; unguiculus about $\frac{3}{5}$ unguis, without teeth; furcula present, reaching to caudal margin of Abd II; mucro spoon shaped, with large mid-dorsal lobe; anal spines 4, in a row across Abd VI; anal papillae non-contiguous; length about 1.3 mm.

***Isotoma louisiana* Scott, 1962. Figure 2.**

OREGON RECORDS. Berry Creek, Feb. and Nov.-Dec. 1960, G. F. Kraft.

DISTRIBUTION. La., Ore.

***Isotoma sensibilis* (Tullberg, 1876).**

OREGON RECORD. Berry Creek, Dec. 1959, G. F. Kraft.

DISTRIBUTION. Fla., Ill., La., Mass., Minn., N. M., N. Y., N. C., Ohio, Ore., Ontario (Canada), Europe.

***Entomobrya triangularis* Schott, 1896.**

OREGON RECORDS. Berry Creek, Jan., Feb., Mar., Apr., May, Jul., Aug., Oct., Nov., Dec., 1960, G. F. Kraft.

DISTRIBUTION. Cal., N. M., Ore., Wash., South America.

***Entomobrya marginata* (Tullberg, 1871).**

OREGON RECORDS. Berry Creek, Oct. 1960, G. F. Kraft.

DISTRIBUTION. Colo., Ill., Iowa, Mass., N. M., N. Y., Ohio, Ore., Tenn., Utah, Wash., Ontario (Canada), Europe, Australasia.

***Tomocerus flavescens* (Tullberg, 1871).**

ADDITIONAL OREGON RECORDS. Berry Creek, June 1959, Feb. and Nov. 1960, G. F. Kraft.

DISTRIBUTION. Alaska, Cal., Colo., D. C., Ga., Ill., Ind., Iowa, La., Me., Md., Mass., Mich., Minn., Miss., Mo., N. H., N. J., N. M., N. Y., N. C., Ohio, Ore., Pa., Tenn., Texas, Utah, Va., Wash., Northwest Territories (Canada), Europe, Asia.

NOTE: This species was first recorded from Oregon by Folsom (1913) from Siskiyou (Sept. 6); Benton County (Aug. 21); Mt. Chintimini (no date); and Corvallis (Dec. 24).

***Sminthurides pumilis* (Krausbauer, 1898).**

OREGON RECORDS. Berry Creek, Dec. 1959; Jan., Feb., Oct., Nov., Dec. 1960, G. F. Kraft.

DISTRIBUTION. Iowa, Ga., La., Mo., N. M., N. C., Ore., Utah, Manitoba (Canada), South America, Europe, Australasia.

Sminthurinus radiculus Maynard, 1951.

OREGON RECORDS. Berry Creek, Mar. 1960, G. F. Kraft.

DISTRIBUTION. N. Y., Ore.

Ptenothrix maculosa (Schott, 1891).

OREGON RECORDS. Berry Creek, Jan., Feb., Mar., Apr., and Nov. 1960, G. F. Kraft.

REFERENCES CITED

- ABSOLON, K. 1900. Zool. Anz. 23: 427.
BORNER, C. 1901. Zool. Anz. 24: 1-15, 332-345, 696-712.
BOURLET, A. 1839. Mem. Soc. Sci. Agr. Lille 1: 384.
FABRICIUS, O. 1780. Fauna groenlandica. Hafniae et Lipsiae 211-214.
FOLSOM, J. W. 1913. Proc. U. S. Natl. Mus. 46: 451-472.
KRAUSBAUER, T. 1898. Zool. Anz., 21: 495-499, 501-504.
MAYNARD, E. A. 1951. The Collembola of New York. Ithaca: Comstock Publ. Co. xxiv + 339 pp.
SCHOTT, H. 1891. Bih. K. Svenska Vet.-Akad. Handl. 17: 1-25.
———. 1896. Ent. Tid. 17: 113-128.
SCOTT, H. G. 1962. Ent. News 73: 67-68.
TULLBERG, T. 1869. Akad. Afhandl. for 1869, p. 7.
———. 1871. Nouv. Mem. Soc. Helvetia Sci. Nat. 6: 67.
———. 1876. Ofv. K. Vet.-Akad. Forhandl. 33: 23-42.
WRAY, D. L. 1950. Bull. Brooklyn Ent. Soc. 41: 79-85.
———. 1952. Bull. Brooklyn Ent. Soc. 47: 97.
———. 1957. Acta Zool. Cracoviensia 2: 112.
———. 1958. Nature Notes Afield, occasional papers 2: 1.